



TENSIONED PROFESSIONAL ELECTROL®

Automatic Electric Projection Screen Model

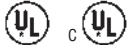
SPECIFICATION DATA

DA-LITE SCREEN COMPANY, INC.
3100 North Detroit Street
Post Office Box 137
Warsaw, Indiana 46581-0137
Phone: 574-267-8101
800-622-3737
Fax: 574-267-7804
www.da-lite.com
e-mail: info@da-lite.com

SUGGESTED SPECIFICATIONS: _____ projection screen(s), _____ (H) x _____ (W), electrically operated 120 volt (60Hz) 2.6 amp. Shall have specially designed motor mounted inside the roller with a patented noise silencer to be three wire quick reversal type, oiled for life, with automatic thermal overload cut-out, integral gears, capacitor and an electric brake to prevent coasting. To have pre-set but adjustable limit switches to automatically stop picture surface in the "up" and "down" positions. The roller to be of 4½" diameter aluminum. Screen fabric to be flame retardant and mildew resistant vinyl Da-Mat, High Contrast Da-Mat, Pearlescent, Cinema Vision, High Contrast Cinema Vision, Da-Tex (Rear) or Dual Vision surface with black masking borders standard. Each side of fabric to have a tab guide cable system to maintain even lateral tension and hold surface flat. Bottom of fabric to be inserted into a custom aluminum slat bar with added weight to provide vertical tension on the screen surface. The ends of the slat to be protected by heavy duty plastic caps. Case to be of wood, with double top for extra rigidity and strength. Case to be finished with a black primer coat, ready to accept final finish by others, heavy metal brackets shall be supplied for mounting screen to ceiling or wall. To be complete with 3 position control switch with cover plate. Screen to be listed by Underwriter's Laboratories.

All viewing surfaces will be seamless.

All viewing surfaces are standard with black backing except Da-Tex and Dual Vision.



VIDEO FORMAT DIMENSIONS

Viewing Area		Nominal Diagonal		Overall Length of Case		Approx. Ship. Wt.	
H x W	Cm	In.	Cm	In.	Cm	Lbs.	Kg
108" x 144"	274 x 366	180"	457	167¼"	425	301	136.5
120" x 160"	305 x 406	200"	508	184¾"	469	306	138.8
126" x 168"	320 x 427	210"	533	193¾"	492	315	142.9
132" x 176"	335 x 447	220"	559	202¾"	515	320	145.2
144" x 192"	366 x 488	240"	610	220¼"	559	380	172.4

HDTV FORMAT DIMENSIONS

Viewing Area		Nominal Diagonal		Overall Length of Case		Approx. Ship. Wt.	
H x W	Cm	In.	Cm	In.	Cm	Lbs.	Kg
92" x 164"	234 x 417	188"	478	185¾"	472	315	142.9
108" x 192"	274 x 488	220"	559	215¼"	547	350	172.4

DIMENSIONS

Sizes		Overall Length of Case		Approx. Ship. Wt.	
H x W	Cm	In.	Cm	Lbs.	Kg
9' x 12'	274 x 366	167¼"	425	301	136.5
12' x 12'	366 x 366	172¼"	438	311	141.1
10'6" x 14'	320 x 427	193¾"	492	315	142.9
14' x 14'	427 x 427	200¾"	510	335	152.0
12' x 16'	366 x 488	220¼"	559	380	172.4

All screens standard with 12" black drop at the top.

Detail dimensional drawings, wiring diagrams and installation instructions available upon request.

Specifications subject to change without notice.

Custom formats and sizes available upon request.

WHEN ORDERING, MARK APPROPRIATE SELECTIONS:

Select size from charts on the other side.

Select viewing surface:

- ☐ Da-Mat
- ☐ High Contrast Da-Mat
- ☐ Cinema Vision
- ☐ High Contrast Cinema Vision
- ☐ Pearlescent
- ☐ Da-Tex (Rear)
- ☐ Dual Vision

Options:

- ☐ Single Motor Low Voltage Control System (LVC).
- ☐ Wireless Remote Control for LVC.
 - ☐ Radio Frequency Remote.
 - ☐ Infrared Remote.
- ☐ Key Locking Cover Plate for 120V or LVC Switch.
- ☐ Key Operated Switch for 120V only (NOTE: Cannot be used with LVC).
- ☐ 220 Volt (50 Hz) Motor.
- ☐ Video Projector Interface Control.
- ☐ External SCB-100 - RS-232 Serial Control Board.
 - ☐ NET-100 Ethernet-Serial Adapter.
- ☐ White box (black standard).

Project: _____

Architect: _____

Phone: _____

Contractor: _____

Phone: _____

Supervisor: _____

Phone: _____

Supplier: _____

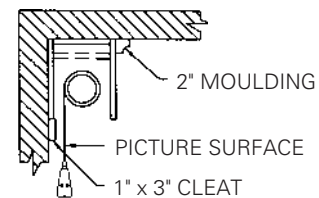
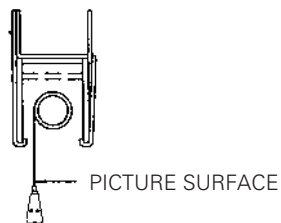
Date: _____

Revised: _____

TENSIONED PROFESSIONAL ELECTROL®

SUGGESTED METHODS OF INSTALLATION

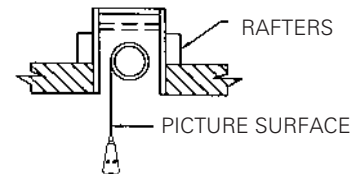
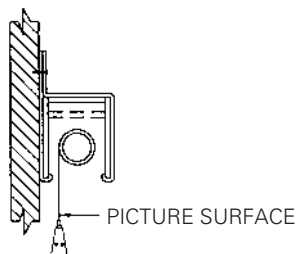
CEILING TYPE HANGER



CEILING MOUNT WITHOUT HANGERS

Screen case is placed flush with the wall and ceiling and held in position by moulding securely attached to the wall.

WALL TYPE HANGER



RECESSED ABOVE CEILING

Other methods of installation will suggest themselves in new buildings where it would be an easy matter to provide a recess for the screen to conceal it when not in use.

Do not seal in—allow access.

WALL OR CEILING MOUNT WITH HANGERS

Wall type hangers and ceiling type hangers are standard equipment. One set is supplied with each screen. Useful for recessed installations.

FOR EXPOSED INSTALLATION

If the screen is to be mounted in an exposed position, it may be covered with finished plywood, veneer, paneling, plastic wall covering or a valance.

