

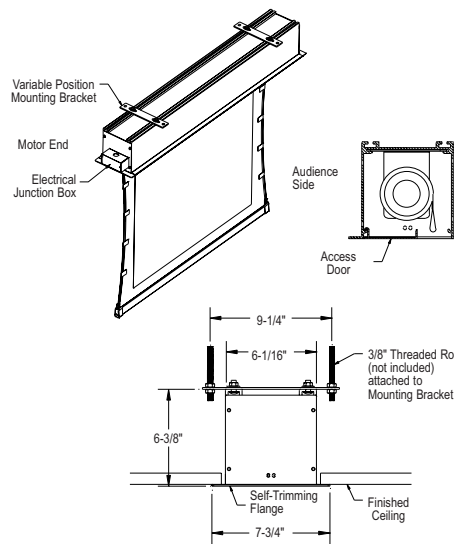
TENSIONED ADVANTAGE ELECTROL®

Automatic Electric Projection Screen

When ordering, make appropriate selections:

- 1 Select size from charts at the lower right.
- 2 Select viewing surface:
 - Da-Mat™
 - High Contrast Da-Mat™
 - Cinema Vision
 - High Contrast Cinema Vision
 - Pearlescent
 - Audio Vision
 - High Contrast Audio Vision
 - High Contrast Cinema Perf
 - Da-Tex (Rear)
 - Dual Vision
- 3 Options:
 - Single Motor Low Voltage Control System—Three Button (available separately or built-in with screen).
 - Wireless Remote Control for L.V.C. system.
 - Radio Frequency Remote
 - Infrared Remote
 - Ivory Control Switch to replace Standard White.
 - Stainless Steel Control Switch to replace Standard Switch.
 - Locking Switch Cover Plate for 120V or L.V.C. Switch.
 - Key-Operated Switch for 120V only (NOTE: Cannot be used with low-voltage system).
 - 220V (50 Hz) Motor.
 - Video Projector Interface Control, 12V or 5V.
 - SCB-100 RS-232 Serial Control Board (built-in or external).
 - NET-100 Ethernet-Serial Adapter.
 - SCB-200 RS-232 Serial Control Board (built-in).
 - NET-200 Ethernet-Serial Adapter.
 - WC-200 Wall Controller.
 - IR-200 Infrared Remote.

Detailed dimensional drawings, wiring diagrams and installation instructions available upon request. Specifications subject to change without notice.



- Designed and developed with the installer and the installation process in mind.
- You can choose to receive the case and fabric together or have them sent separately to ensure that the screen surface is not damaged during the "rough-in" stages of construction.
- UL Plenum rated case.
- Tab guide cable system holds screen surface flat.

SUGGESTED SPECIFICATIONS:

_____ projection screens, _____(H) x _____(W), electrically operated 120 volt (60 Hz) 1.4 amp. with a four prong male plug-in connector on the motor. Motor to be specially designed and mounted inside the roller with a patented noise silencer to be three wire quick reversal type, oiled for life, with automatic thermal overload cut-out, integral gears, capacitor and an electric brake to prevent coasting. To have preset but adjustable limit switches to automatically stop picture surface in the "up" and "down" positions. Junction box shall be integrated into the housing making it possible to install the housing and wire to the building's electrical system during construction. The junction box shall contain a four prong connector that is mounted in the housing for easy plug-in connection to the motorized fabric and roller assembly. The motorized fabric and roller assembly to be installed in the case at the factory or at a later time at the job site. The fabric roller to be of rigid aluminum, 3-3/16" in diameter. Screen to be designed for left or right-hand motor installation. Screen fabric to be seamless, flame retardant and mildew resistant vinyl, with Da-Mat, High Contrast Da-Mat, Cinema Vision, High Contrast Cinema Vision, High Contrast Cinema Perf, Pearlescent, Audio Vision, High Contrast Audio Vision, Da-Tex (rear) or Dual Vision surface with black masked borders standard. Each side of the fabric to have tab guide cable system to maintain even lateral tension and hold surface flat. Custom slat bar with added weight maintains vertical tension on the screen surface. The ends of the aluminum slat to be protected by heavy duty plastic plugs. Top, front and back of case to be made of extruded aluminum painted white. End caps to be of heavy gauge steel, with case and end caps painted white. Bottom of case to have a removable access door. Door to be of extruded aluminum painted white. Bottom of case to be self-trimming, with a built-in flange around the bottom of the case. To be completed with a three-position control switch and cover plate. Suitable for use in environmental air space in accordance with section 300-22 (c) of the National Electric Code, and sections 2-128, 12-010 (3) and 12-100 of the Canadian Electrical Code, part 1, CSA C22.1. Screen to be listed by Underwriters' Laboratories.



All viewing surfaces will be seamless.
Audio Vision, High Contrast Audio Vision and High Contrast Cinema Perf available in sizes up to 8' in height.
All viewing surfaces are standard with black backing except Da-Tex and Dual Vision.

VIDEO FORMATS

Viewing Area H x W	Nominal Diagonal	Overall Case Length	Approx. Shipping Wt. Lbs.
43" x 57"	72"	72-1/2"	77
50" x 67"	84"	83-1/2"	86
60" x 80"	100"	97-1/2"	98
69" x 92"	120"	111-1/2"	111
87" x 116"	150"	138-1/2"	135
108" x 144"	180"	163-1/2"	151
120" x 160"	200"	180-1/2"	169

HDTV FORMATS

Viewing Area H x W	Nominal Diagonal	Overall Case Length	Approx. Shipping Wt. Lbs.
45" x 80"	92"	96"	92
52" x 92"	106"	108-1/2"	99
54" x 96"	110"	113"	104
58" x 104"	119"	121-1/2"	114
65" x 116"	133"	134-1/2"	135
78" x 139"	159"	159-1/2"	148

DIMENSIONS

Viewing Area H x W	Overall Case Length	Approx. Shipping Wt. Lbs.
50" x 50"	66-1/2"	70
60" x 60"	77-1/2"	80
70" x 70"	89"	90
84" x 84"	105-1/2"	104
6' x 8'	115-1/2"	114
8' x 8'	119"	116
7' x 9'	129-1/2"	126
9' x 9'	128"	124
8' x 10'	143"	132
10' x 10'	140"	135
9' x 12'	163-1/2"	146

Overall case length dimensions $\pm 1/4$ ".
Note: All sizes come standard with 12" black drop at top, except 200" diagonal which has only 4" of drop. Extra drop may alter dimensions. Contact Da-Lite for details.
Note: Letterbox formats and custom sizes available upon request.
Note: Add 10" to overall case length for built-in LVC, SCB-100 or SCB-200.
 Electrical junction box extends 2-1/8" past case length on left end of case (1-1/8" past ceiling flange). Internal junction box available (will add 3-1/2" to overall case length and must be specified at time of order). Units with built-in LVC will have internal junction box.