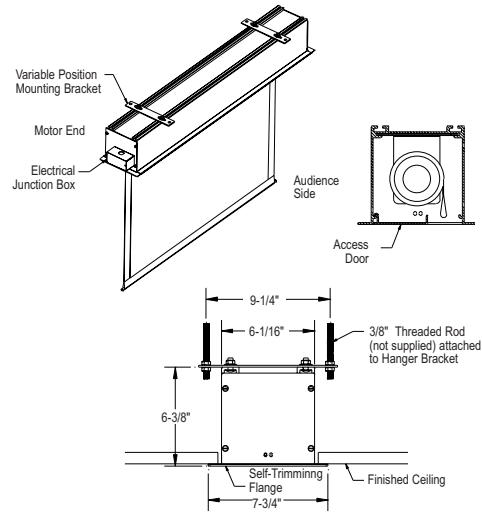


ADVANTAGE ELECTROL®

Automatic Electric Projection Screen

When ordering, make appropriate selections:

- 1 Select size from charts at the lower right.
- 2 Select viewing surface:
 - Matte White
 - High Contrast Matte White
 - Video Spectra®1.5
 - Glass Beaded
 - High Power
- 3 Options:
 - Black "Extra Drop" to lower picture area more than normal. Maximum total drop 13' including picture area.
 - White "Extra Drop" to lower picture area more than normal. Maximum total drop 13' including picture area.
 - Single Motor Low Voltage Control System—Three Button (available separately or built-in with screen).
 - Wireless Remote Control for L.V.C. system.
 - Radio Frequency Remote
 - Infrared Remote
 - Ivory Control Switch to replace Standard White.
 - Stainless Steel Control Switch to replace Standard Switch.
 - Locking Switch Cover Plate for 120V or L.V.C. Switch.
 - Key-Operated Switch for 120V only (NOTE: Cannot be used with low-voltage system).
 - No Borders (Black masking borders standard).
 - 220V (50 Hz) Motor.
 - Video Projector Interface Control, 12V or 5V.
 - SCB-100 RS-232 Serial Control Board (built-in or external).
 - NET-100 Ethernet-Serial Adapter.
 - SCB-200 RS-232 Serial Control Board (built-in).
 - NET-200 Ethernet-Serial Adapter.
 - WC-200 Wall Controller.
 - IR-200 Infrared Remote.



- Designed and developed with the installer and the installation process in mind.
- You can choose to receive the case and fabric together or have them sent separately to ensure that the screen surface is not damaged during the "rough-in" stages of construction.
- UL Plenum rated case.

SUGGESTED SPECIFICATIONS:

_____ projection screens, _____ (H) x _____ (W), electrically operated 120 volt (60Hz), 1.4 amp with a four prong male plug-in connector on the motor. Motor to be specially designed and mounted inside the roller with a patented noise silencer to be three wire quick reversal type, oiled for life, with automatic thermal overload cut-out, integral gears, capacitor and an electric brake to prevent coasting. To have preset but adjustable limit switches to automatically stop picture surface in the "up" and "down" positions. Junction box shall be integrated into the housing making it possible to install the housing and wire to the building's electrical system during construction. The junction box shall contain a four prong connector that is mounted in the housing for easy plug-in connection to the motorized fabric and roller assembly. The roller to be of rigid metal, 3" in diameter. The motorized fabric and roller assembly to be installed in the case at the factory or at a later time at the job site. Roller mounting brackets to be adjustable to allow centering or offsetting of the screen within the case. Screen to be designed for left or right-hand motor installation. Screen fabric to be flame retardant and mildew resistant fiberglass with Glass Beaded, Matte White, High Contrast Matte White, Video Spectra® 1.5 or High Power picture surface with black masking borders standard. Bottom of fabric shall be formed into a pocket holding a 3/8" metal rod. Heavy duty plastic caps shall protect the ends of the rod. Top, front and back of case to be made of extruded aluminum painted white. End caps to be of heavy gauge steel, with case and end caps painted white. Bottom of case to have a removable access door. Door to be of extruded aluminum painted white. Bottom of case to be self-trimming, with a built-in flange around the bottom of the case. To be complete with a three-position control switch and cover plate. Suitable for use in environmental air space in accordance with section 300-22 (c) of the National Electric Code, and sections 2-128, 12-010 (3) and 12-100 of the Canadian Electrical Code, part 1, CSA C22.1. Screen to be listed by Underwriters' Laboratories.



Matte White: Horizontal seam required when both dimensions exceed 10'.
 Glass Beaded: Horizontal seam required when both dimensions exceed 8'.
 Video Spectra®1.5 and High Contrast Matte White: Available in sizes where both dimensions do not exceed 8'.
 High Power: Available in sizes up to and including 9' x 12'. Horizontal seam required when both dimensions exceed 6'.

Detailed dimensional drawings, wiring diagrams and installation instructions available upon request. Specifications subject to change without notice.

VIDEO FORMATS

Viewing Area H x W	Nominal Diagonal	Overall Case Length	Approx. Shipping Wt. Lbs.
43" x 57"	72"	65-1/2"	55
50" x 67"	84"	75-1/2"	59
57" x 77"	96"	89-1/2"	62
60" x 80"	100"	89-1/2"	67
69" x 92"	120"	101-1/2"	79
87" x 116"	150"	125-1/2"	96
105" x 140"	180"	149-1/2"	106
120" x 160"	200"	169-1/2"	123

HDTV FORMATS

Viewing Area H x W	Nominal Diagonal	Overall Case Length	Approx. Shipping Wt. Lbs.
45" x 80"	92"	89-1/2"	67
52" x 92"	106"	101-1/2"	73
54" x 96"	110"	105-1/2"	77
58" x 104"	119"	113-1/2"	85
65" x 116"	133"	125-1/2"	87
78" x 139"	159"	149-1/2"	115

DIMENSIONS

Sizes H x W	Overall Case Length	Approx. Shipping Wt. Lbs.
50" x 50"	55-1/2"	49
60" x 60"	65-1/2"	56
70" x 70"	75-1/2"	62
84" x 84"	89-1/2"	71
6' x 8'	101-1/2"	74
8' x 8'	101-1/2"	78
7' x 9'	113-1/2"	82
9' x 9'	113-1/2"	89
8' x 10'	125-1/2"	97
10' x 10'	125-1/2"	101
9' x 12'	149-1/2"	104
12' x 12'	149-1/2"	119

Overall case length dimensions ± 1/4".

Note: Letterbox formats and custom sizes available upon request.
 Note: Add 10" to overall case length for built-in LVC, SCB-100 or SCB-200.

Electrical junction box extends 2-1/8" past case length on left end of case (1-1/8" past ceiling flange). Internal junction box available (will add 3-1/2" to overall case length and must be specified at time of order). Units with built-in LVC will have internal junction box.