

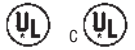


DA-LIFT
Video Projector Lift

SPECIFICATION DATA

DA-LITE SCREEN COMPANY, INC.
3100 North Detroit Street
Post Office Box 137
Warsaw, Indiana 46581-0137
Phone: 574-267-8101
800-622-3737
Fax: 574-267-7804
www.da-lite.com
e-mail: info@da-lite.com

SUGGESTED SPECIFICATIONS: _____ Video Projector Lift, Model _____ Da-Lift 15, 19 or 19L, electrically operated 120 V (60 Hz) 2.2 amp. for projectors weighing up to 300 pounds. Da-Lift 10M and 15M electrically operated 120 V (60 Hz) 1.5 amp. for projectors weighing up to 40 pounds. To have rack and pinion, with chain drive lift mechanism. Three wire quick reversal motor especially designed for the purpose, to be ball bearing and oiled for life. To have preset but adjustable limit switches to automatically stop lift in the "up" and "down" positions. Stop action to be positive to prevent coasting. Frame to be black welded steel with two electrical outlets furnished on the platform, for ceiling recessed installation. Bottom of projector lift to be adjustable to allow flush installation with surrounding surface. Removable tray is attached to bottom frame assembly to allow for ceiling tile attachment (by others). To be complete with three position control switch with cover plate. Optional low voltage, radio frequency or infrared, remotes available. Optional plenum kit available where required by code. To be listed by Underwriters' Laboratories.

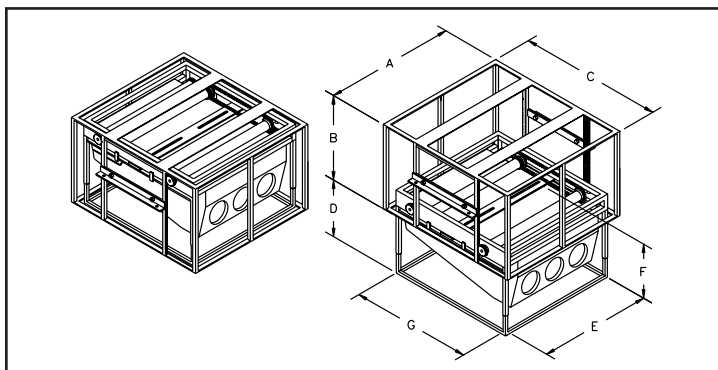


DA-LIFT VIDEO PROJECTOR LIFT SPECIFICATIONS

Model	Load Cap.		Width "A"		Height "B"		Depth "C"		Travel "D"	
	Lbs.	Kg	In.	Cm	In.	Cm	In.	Cm	In.	Cm
Da-Lift 10M	40	18	22 ⁵ / ₈ "	58	15"	38	22"	56	10"	25
Da-Lift 15M	40	18	22 ⁵ / ₈ "	58	20"	51	22"	56	15"	38
Da-Lift 15	300	136	30 ³ / ₄ "	78	20"	51	34"	86	15"	38
Da-Lift 19	300	136	32 ³ / ₄ "	83	24"	61	38"	97	19"	48
Da-Lift 19L	300	136	42 ³ / ₄ "	109	24"	61	48"	122	19"	48

INSIDE DIMENSIONS, WEIGHT, AND SHIPPING DIMENSIONS

Model	Inside Dimensions						Unit Weight		Approx. Ship. Wt.	
	Width "E"		Height "F"		Depth "G"		Lbs.	Kg	Lbs.	Kg
	In.	Cm	In.	Cm	In.	Cm				
Da-Lift 10M	18 ¹ / ₂ "	47	10" - 17"	25 - 43	17 ¹ / ₂ "	45	80	36.3	120	54.4
Da-Lift 15M	18 ¹ / ₂ "	47	15" - 22"	38 - 56	17 ¹ / ₂ "	45	85	38.6	130	59.0
Da-Lift 15	26 ¹ / ₂ "	67	15" - 22"	38 - 56	28 ¹ / ₂ "	72	116	52.6	155	70.3
Da-Lift 19	28 ¹ / ₂ "	72	19" - 30"	48 - 76	32 ¹ / ₂ "	82	142	64.4	170	77.1
Da-Lift 19L	38 ¹ / ₂ "	98	19" - 30"	48 - 76	42 ¹ / ₂ "	108	177	80.3	190	86.2



WHEN ORDERING, MAKE APPROPRIATE SELECTIONS:

Select size from charts on the other side.

Optional Accessories:

- Single motor Low Voltage Control (LVC).
- Wireless Remote Control for LVC.
 - Radio Frequency Remote
 - Infrared Remote
- Key Locking Cover Plate for 120 V Switch or LVC.
- Key Operated Switch for 120 V only (NOTE: Cannot be used with LVC).
- 220/240 Volt (50 Hz) Motor.
- Video Projector Interface Control.
- SCB-100 RS-232 Serial Control Board - external.
 - NET-100 Ethernet-Serial Adapter

Project: _____

Architect: _____

Phone: _____

Contractor: _____

Phone: _____

Supervisor: _____

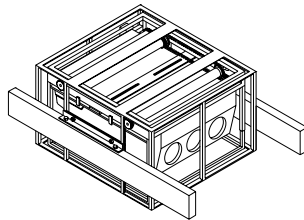
Phone: _____

Date: _____

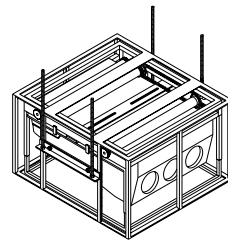
Revised: _____

DA-LIFT

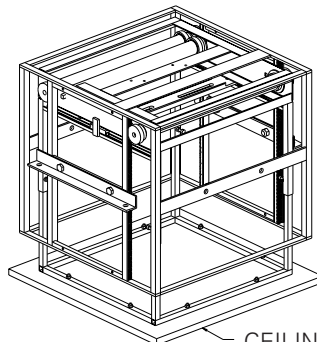
**SUGGESTED METHODS
OF INSTALLATION**



**METHOD A
UNIT ATTACHED TO WOOD
BOARDS**



**METHOD B
UNIT ATTACHED TO
THREADED STUDS**



CEILING TILE ATTACHED TO
INNER BOTTOM FRAME.
CEILING TILE AND
HARDWARE NOT INCLUDED.