



# SCB-100

Serial Control Board

## SPECIFICATION DATA

**DA-LITE SCREEN COMPANY, INC.**  
3100 North Detroit Street  
Post Office Box 137  
Warsaw, Indiana 46581-0137  
Phone: 574-267-8101  
800-622-3737  
Fax: 574-267-7804  
www.da-lite.com  
e-mail: info@da-lite.com

**SUGGESTED SPECIFICATIONS:** The Serial Control Board SCB-100 allows for control over a screen using RS-232C communication and/or relay closures. Can be used to control most 100VAC-240VAC screens or projector lift. Electrical requirements are 100-240VAC 50-60HZ 10 Amp. I/O ports include 2 motor connections to operate 1 or 2 single motor screens, a screen and projector lift or a masking screen with 2 motors. Connections provided by 6" wire leads. Two RS-232 ports for connection to the optional Da-Lite NET-100 Ethernet-Serial Adaptor and/or a third party control system. Ports 1 and 2 can control either motor 1 or 2. Connections provided by captive screw terminals.

Two dry contact closure (no voltage input) ports for connection of multiple low voltage wall switches or a third party control device with dry contact closure. Port 1 controls motor 1 only, port 2 controls motor 2 only. Connections provided by captive screw terminals.

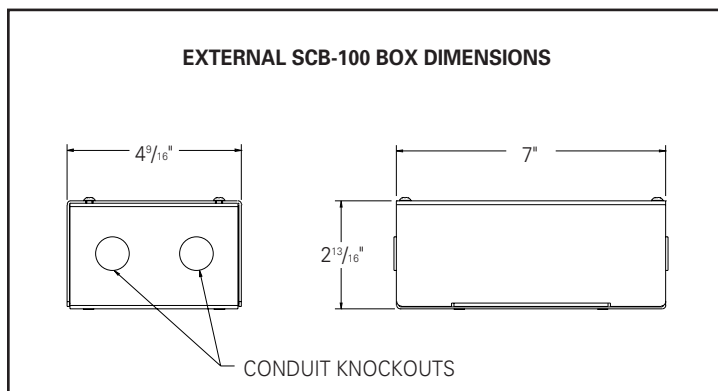
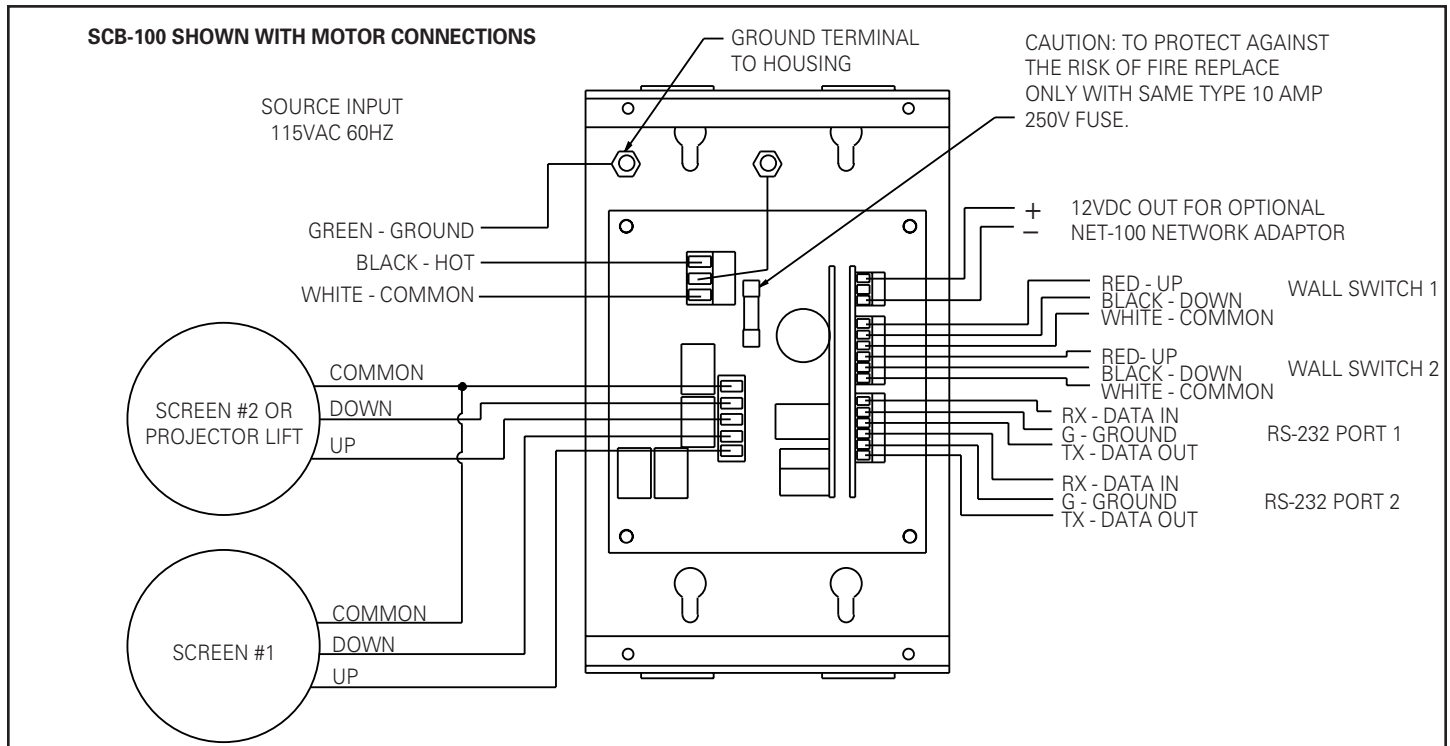
One 12VDC output for supply to the optional Da-Lite NET-100 Ethernet-Serial Adaptor. Connections provided by captive screw terminals.

6" wire leads provided for 100VAC-240VAC input.

The outer housing is made of galvanized steel with a removable cover for easy access to connections. The housing base includes four 7/8" diameter knockouts for connection of 1/2" conduit and screw mounting holes to secure the SCB-100 to most surfaces.

The SCB-100 can be built-in to the Contour®, Advantage®, Advantage® Deluxe and Director series screens. This will add an additional 3/4" to the Contour®, and 10" to the Advantage® screen case. The Advantage® Deluxe and Director cases do not change length.

Note: The SCB-100 cannot be used to control the Da-Lite Horizon, Tensioned Horizon, Ascender® and Motorized Scenic Roller screens.



Project: \_\_\_\_\_

Phone: \_\_\_\_\_

Contractor: \_\_\_\_\_

Phone: \_\_\_\_\_

Supervisor: \_\_\_\_\_

Phone: \_\_\_\_\_

Supplier: \_\_\_\_\_

Date: \_\_\_\_\_

Revised: \_\_\_\_\_